

SEMINARIO + WEBINAR

PNRR: edilizia scolastica, sportiva,  
rigenerazione urbana

# **Nuova Scuola Primaria con servizi sportivi e alla comunità di Borgosatollo**

Arch. Gianmarco Fornara – Settanta7 s.r.l.

TSPORT

SPORT & IMPIANTI

[www.sporteimpianti.it](http://www.sporteimpianti.it)

08/07/2024



# PROGETTARE E COSTRUIRE IN BIOEDILIZIA

SQM - 3 600 mq

## PARTNERS

Opera Mista; Sistema Group

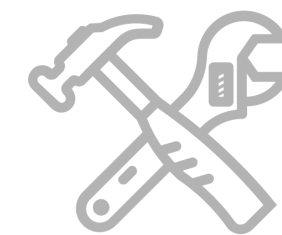
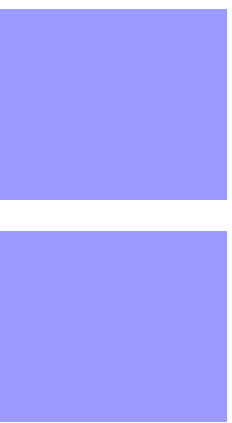
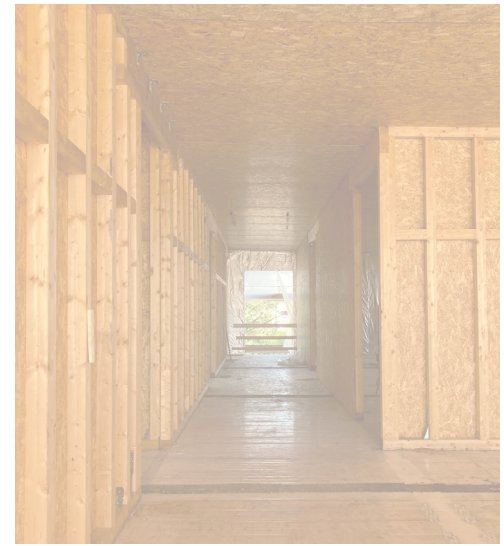
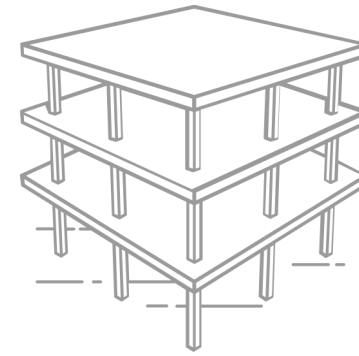
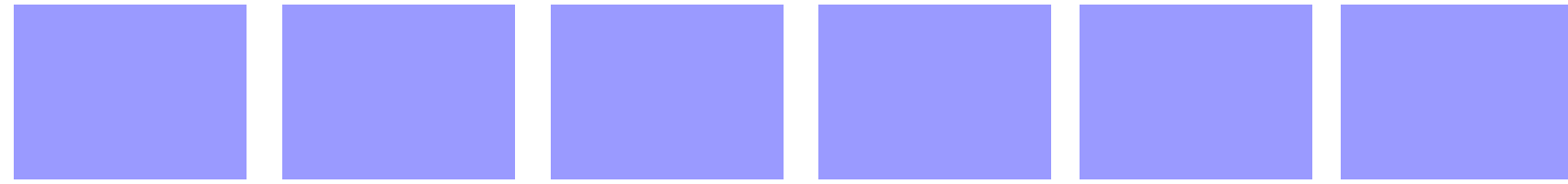
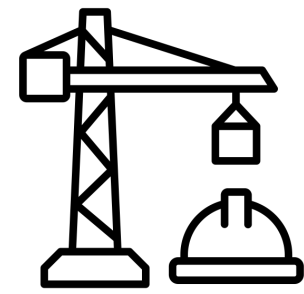
## CONSTRUCTION

Benis Costruzioni S.r.l.

## I VALORI AGGIUNTI

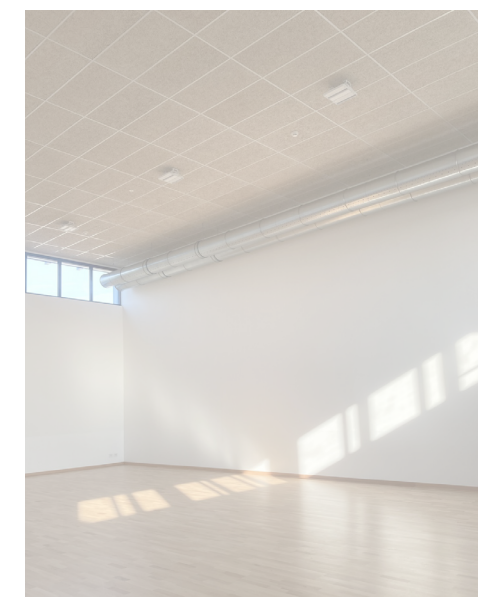
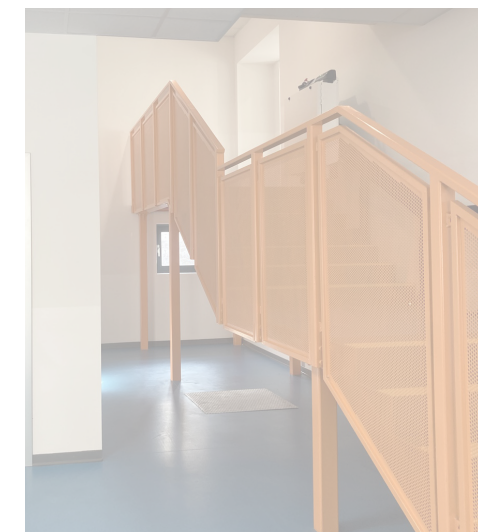
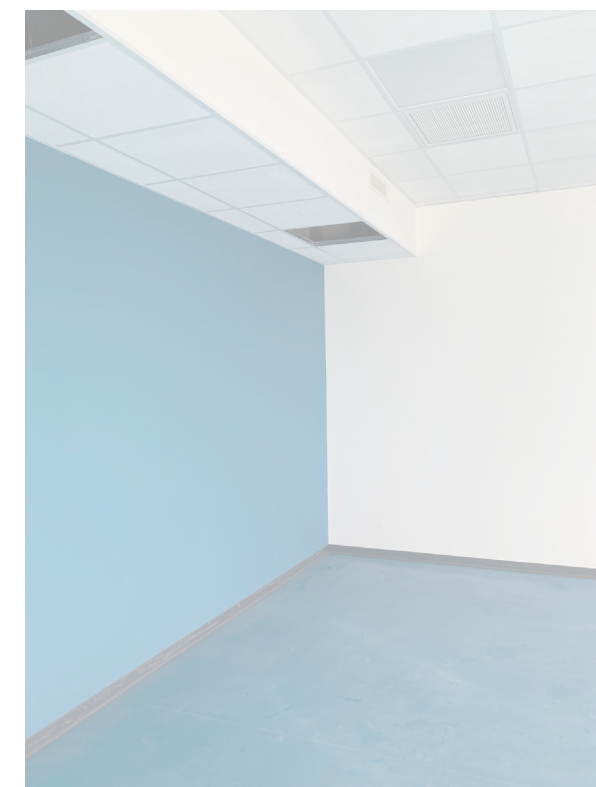
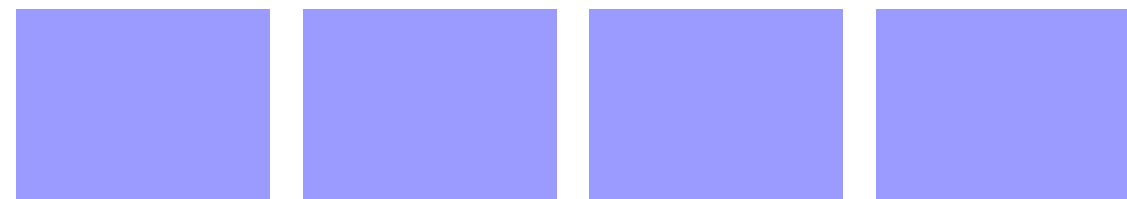
Tecnologie innovative  
Materiali sostenibili  
Rapidità di esecuzione





# FASE 1

L'INIZIO DEL CANTIERE





dicembre

2021

marzo

2022

# FASE 1

l'inizio del cantiere

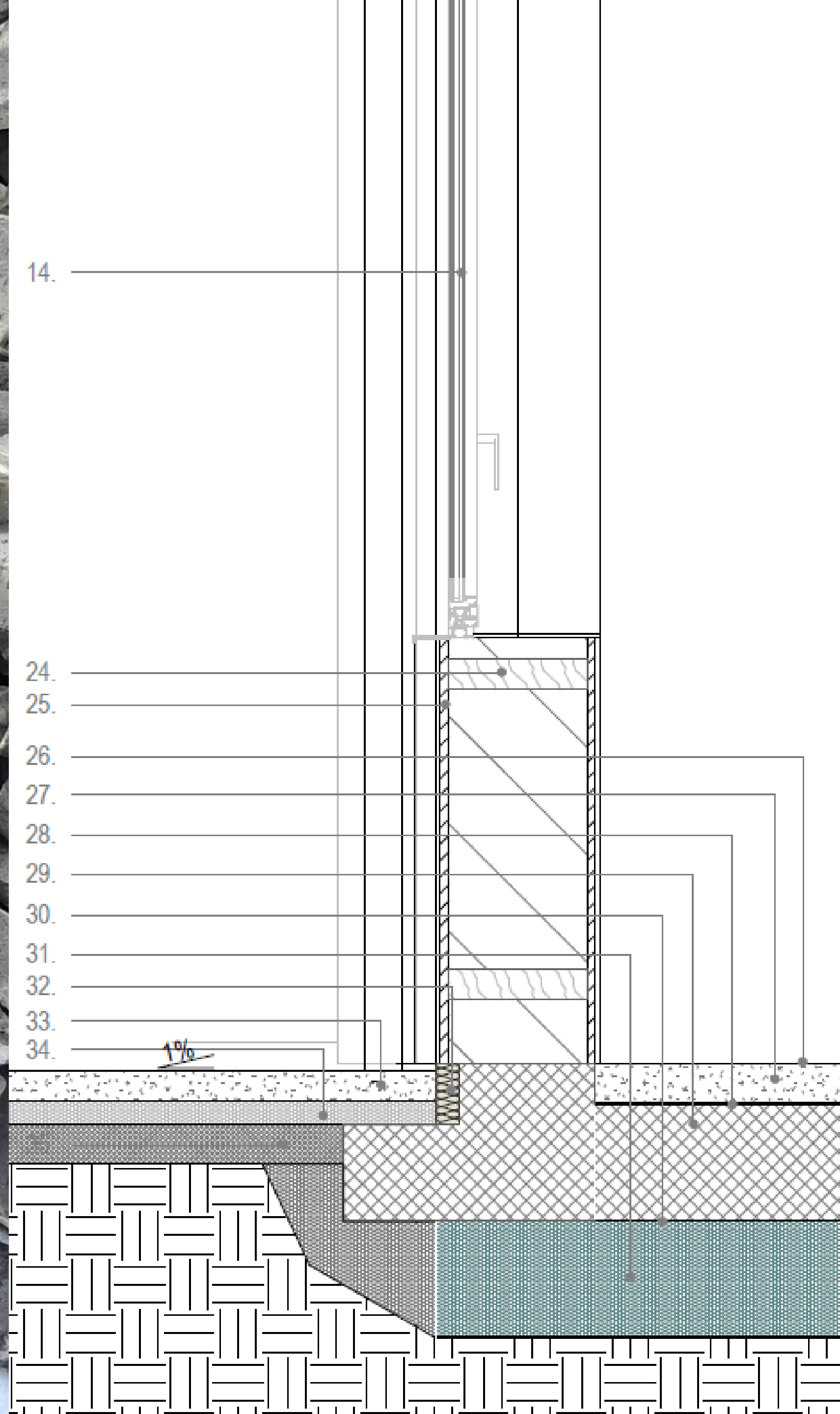


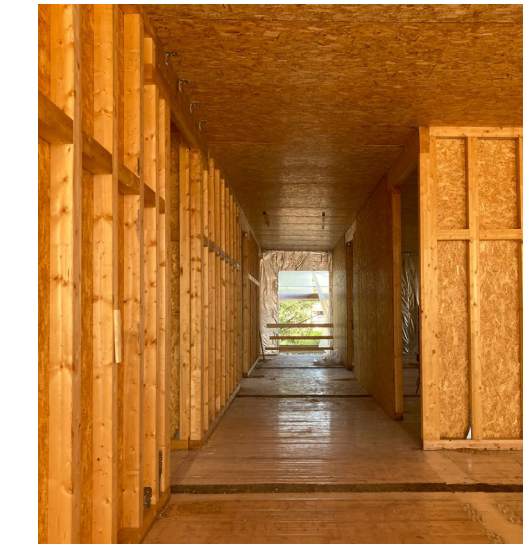
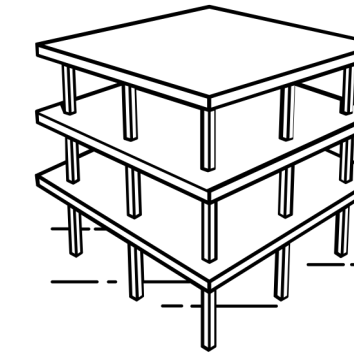
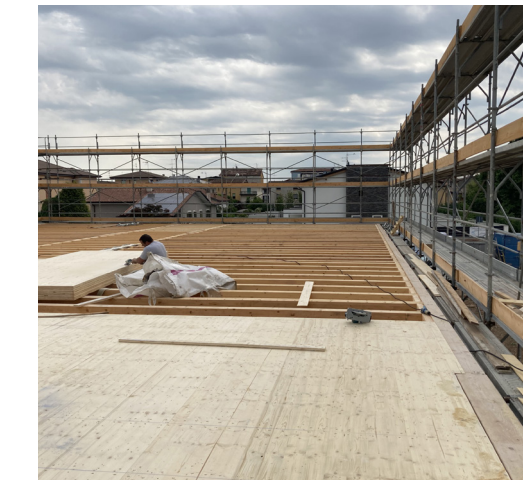
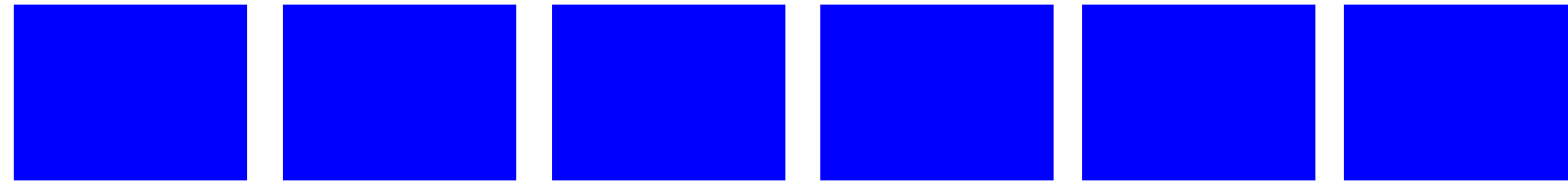
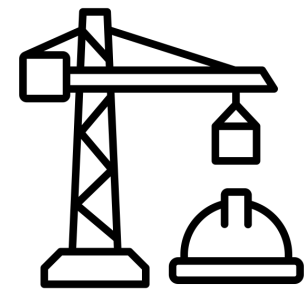
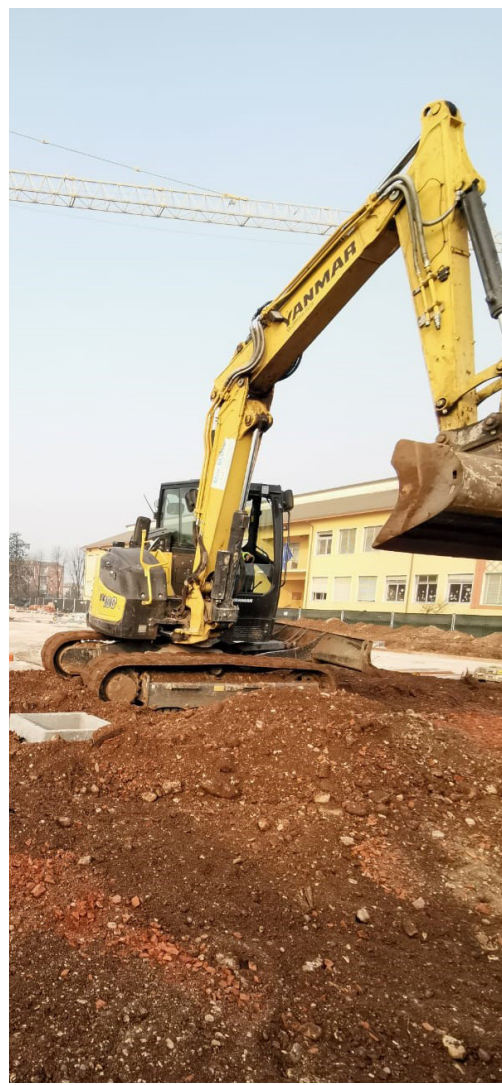


**GHIAIA DI VETRO**



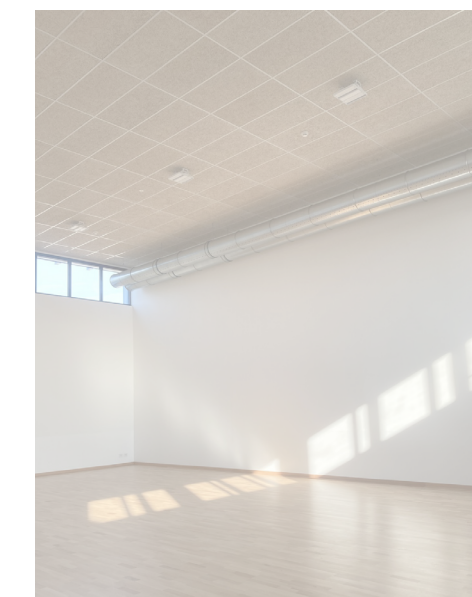
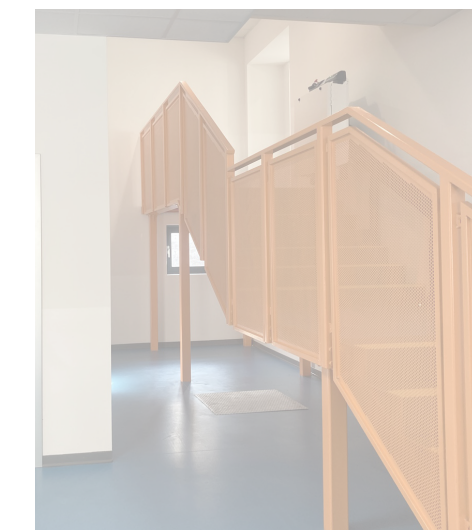
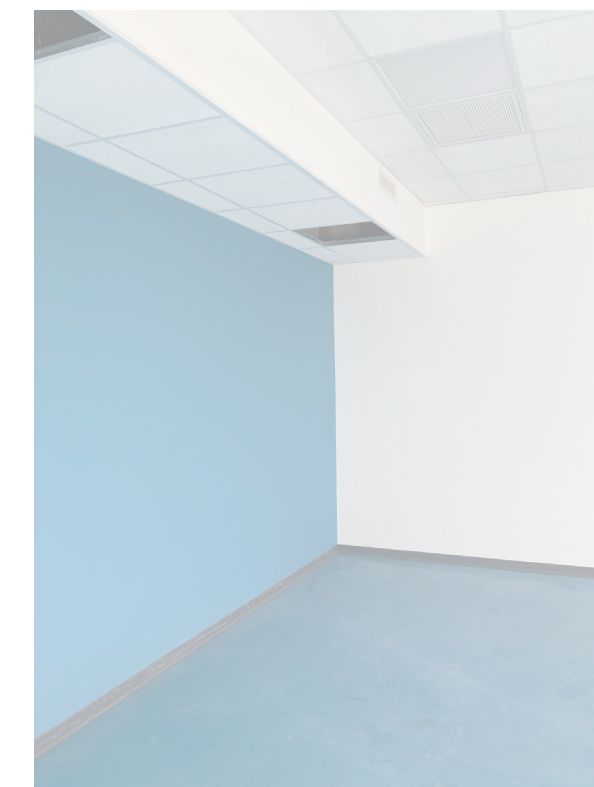
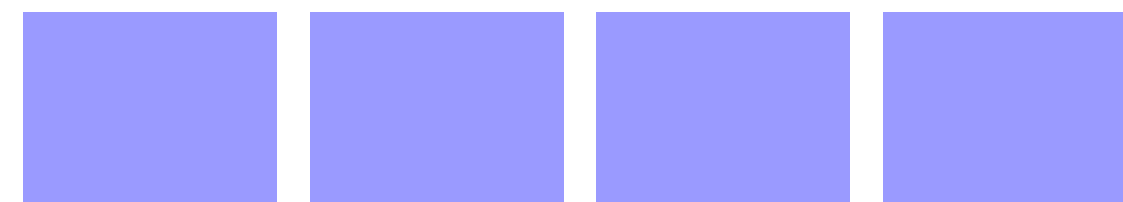
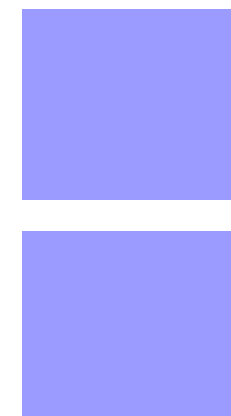
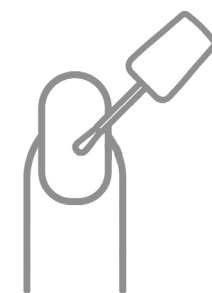
# ISOLAMENTO + ANTIRISALITA





# FASE 2

## LA STRUTTURA





**FASE 2**

la struttura

marzo

luglio

2022



**LEGNO E PAGLIA: SCUOLA...**








# ... E PALESTRA



An aerial photograph of a construction site. In the center, two long, rectangular buildings are highlighted with colored outlines. The top building has a red roof and is outlined in red. The bottom building has a yellow roof and is outlined in yellow. The surrounding area includes a parking lot with several cars, a road, and other buildings. A semi-transparent white box with blue text is at the top, and a semi-transparent white box with blue text is at the bottom.

TENSOSTRUTTURA

**PREFABBRICAZIONE A PIE' D'OPERA**



# LA TENSOSTRUTTURA



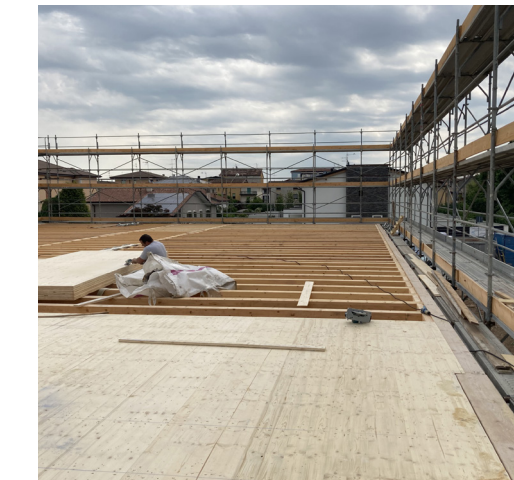
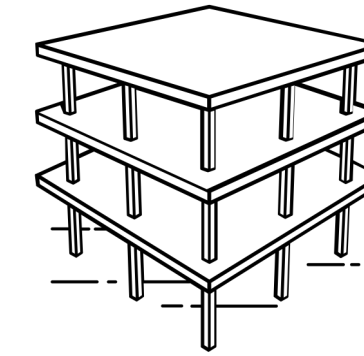
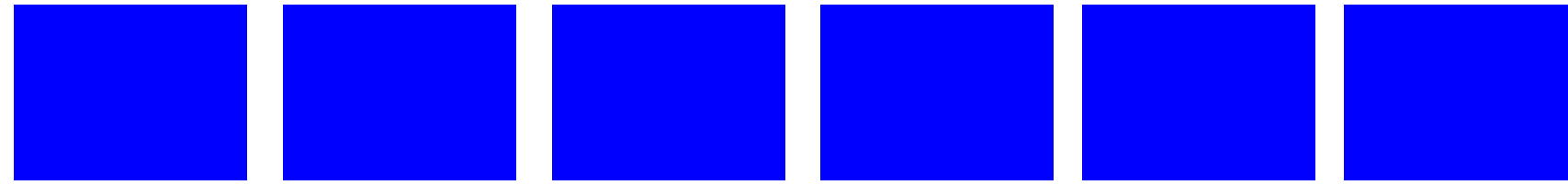
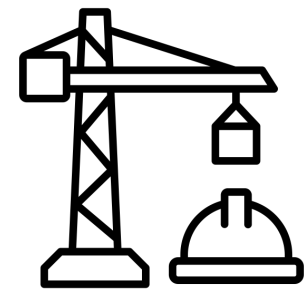
**POSA IN OPERA**





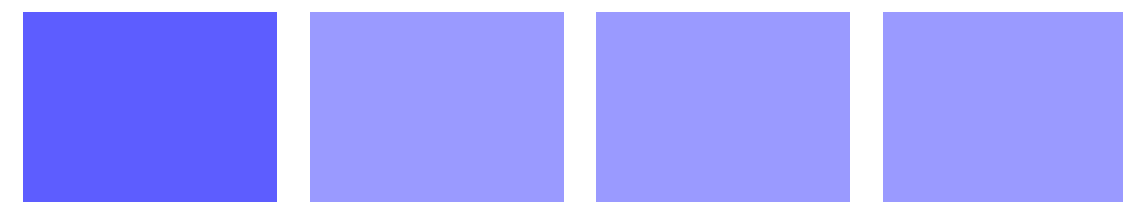
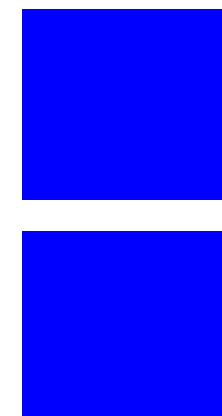
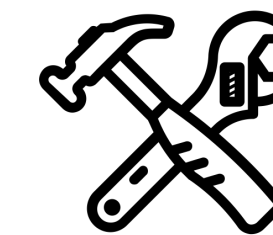
**POSA IN OPERA**

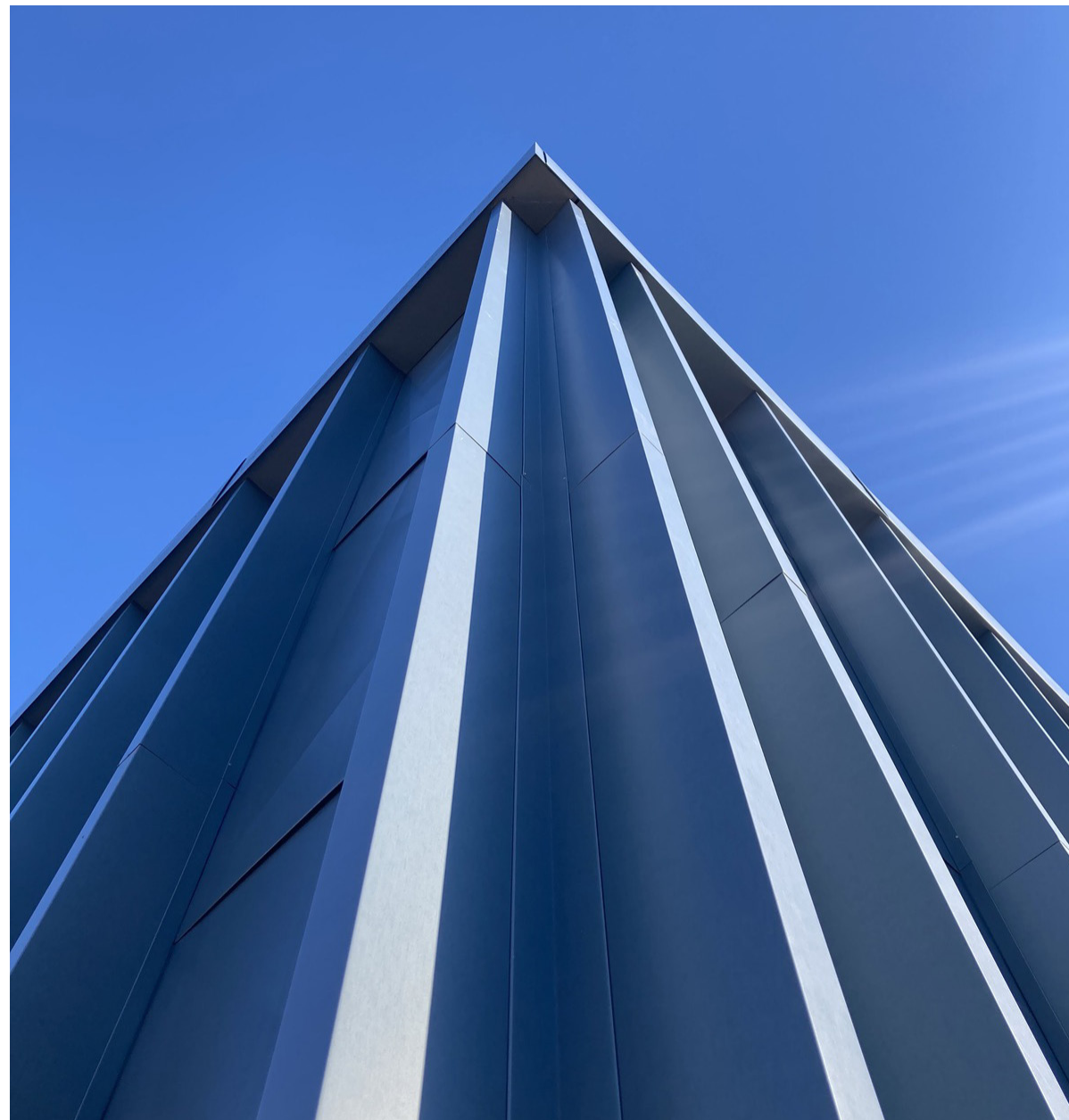
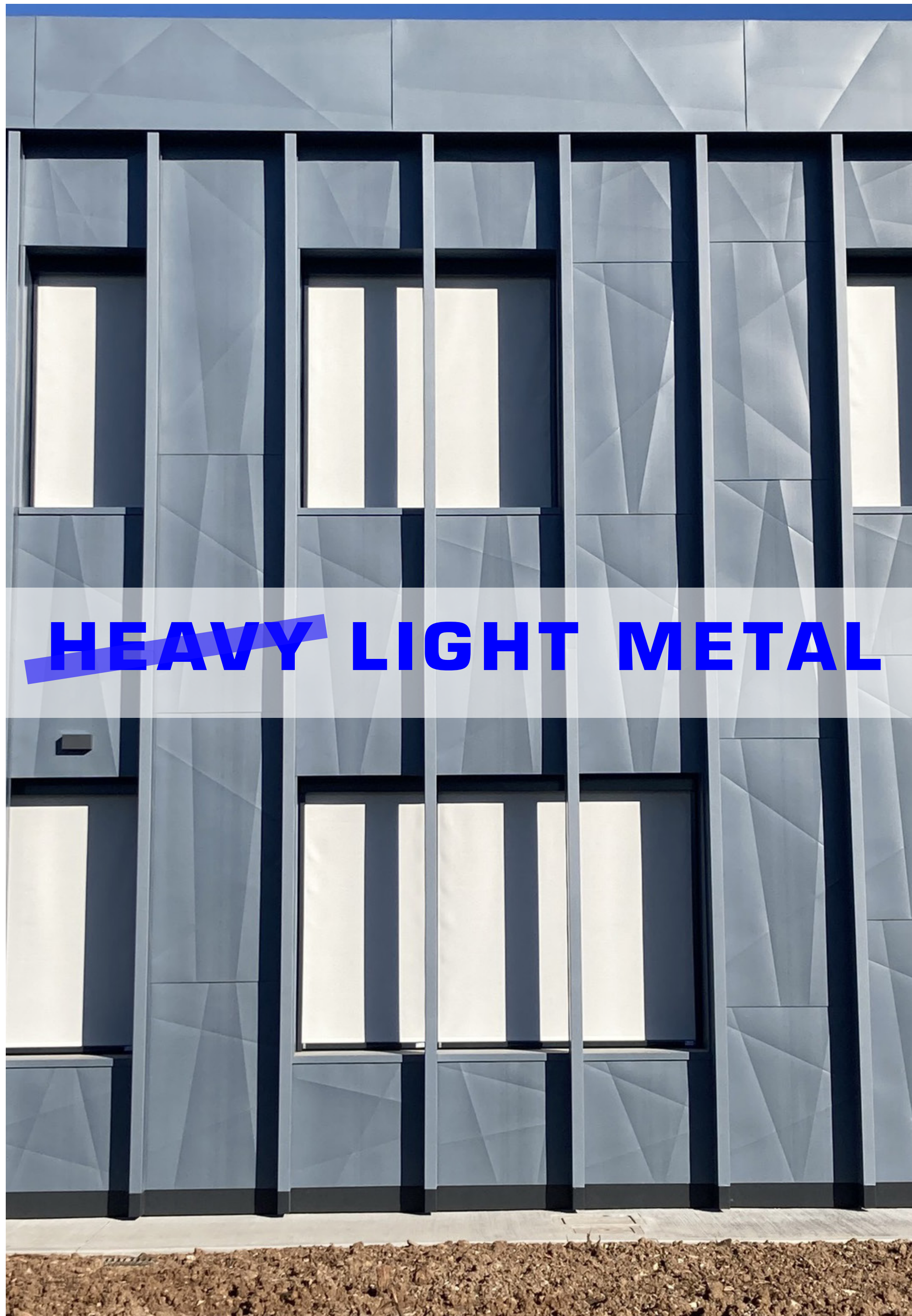




# FASE 3

## LO SVILUPPO





luglio  
dicembre  
2022

FASE 3 sviluppo





**ZINCO-TITANIO**

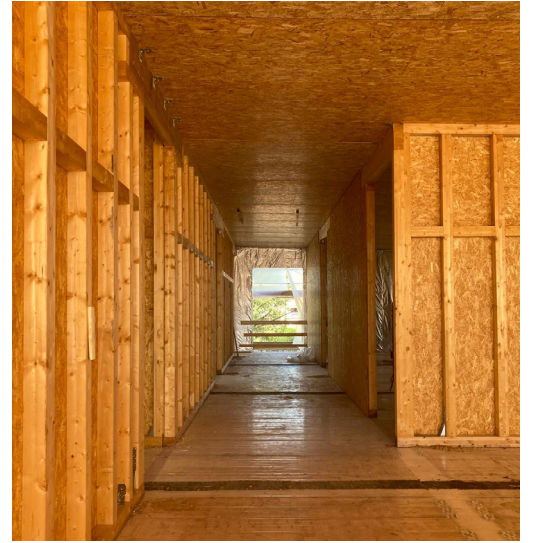
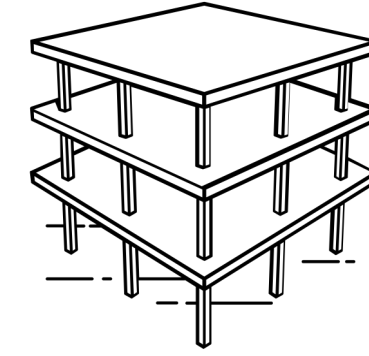
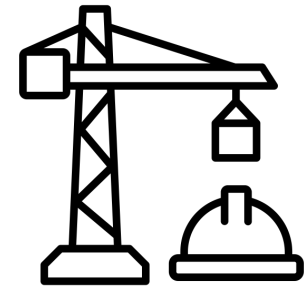
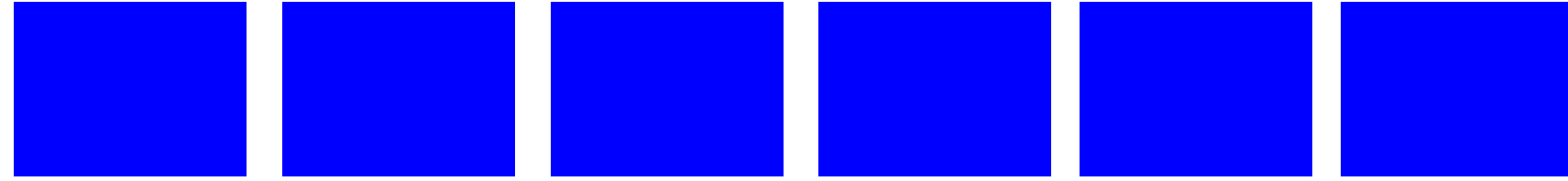


The image is a composite of two photographs. The left side shows a close-up of a wall with a light blue-grey zinc-titanium metal panel and a darker grey panel. A small circular fastener is visible on the light panel. The right side shows a perspective view of a corrugated metal roof with a dark blue-grey finish, set against a background of a construction site with yellow beams and green grass. A white banner with blue text is overlaid on the bottom left of the image.

**ZINCO-TITANIO**

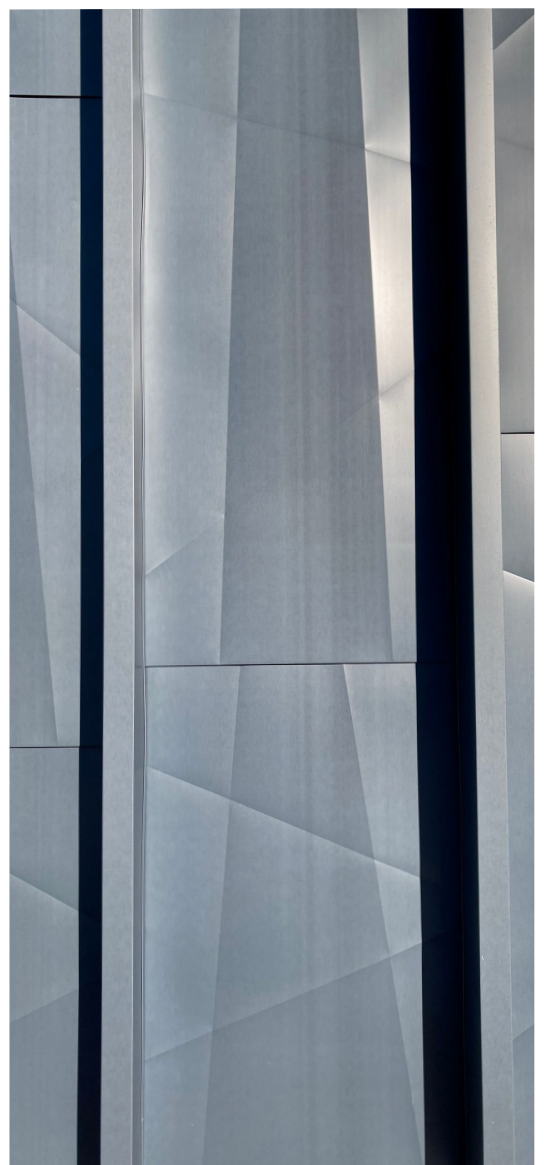
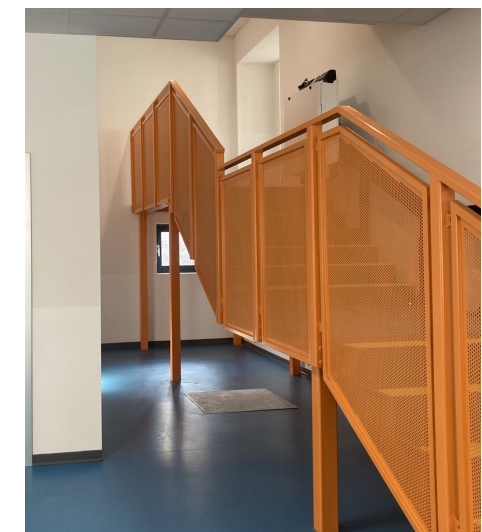
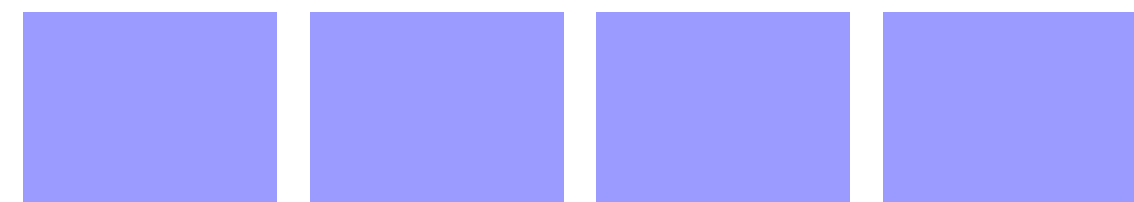
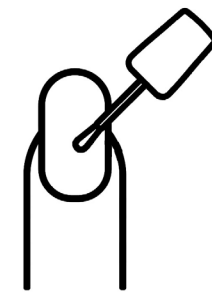
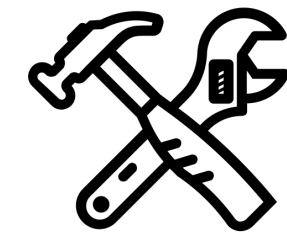
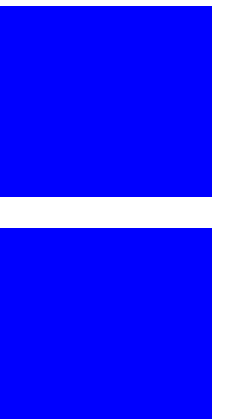


**FINITURE INTERNE**



# FASE 4

## COMPLETAMENTO







SEMINARIO + WEBINAR

PNRR: edilizia scolastica, sportiva,  
rigenerazione urbana

**Grazie per l'attenzione**

Arch. Gianmarco Fornara – Settanta7 S.R.L.

TSPORT

SPORT & IMPIANTI

[www.sporteimpianti.it](http://www.sporteimpianti.it)

08/07/2024

